



IMP GLOBAL GROUP

BUILDING INVESTMENT ECOSYSTEM



CONSULTANCY



REAL ESTATE



STEP ALLIANCE GROUP
COMMITTED TO EXCELLENCE

CONSTRUCTION



MANUFACTURING



HOSPITALITY



AGRI-BUSINESS



TECHNOLOGIES

PROFILE



www.impglobalgroup.com

IMP GLOBAL GROUP (IGG) is a multinational, multidisciplinary, and multicultural business consortium with diversified strategic interests spanning Consultancy, Real Estate, Construction, Manufacturing, Hospitality, Agribusiness, Technology, and Investment Services. With an established presence across Africa, the Middle East, Europe, North America, and Asia, IGG is committed to fostering innovation, operational excellence, and sustainable growth across the sectors in which it operates.

IGG functions as a globally integrated ecosystem of independently managed yet synergistically aligned business units. This unique structure enables the group to maintain agility and sectoral focus while benefiting from shared expertise, strategic collaboration, and enterprise-wide innovation.

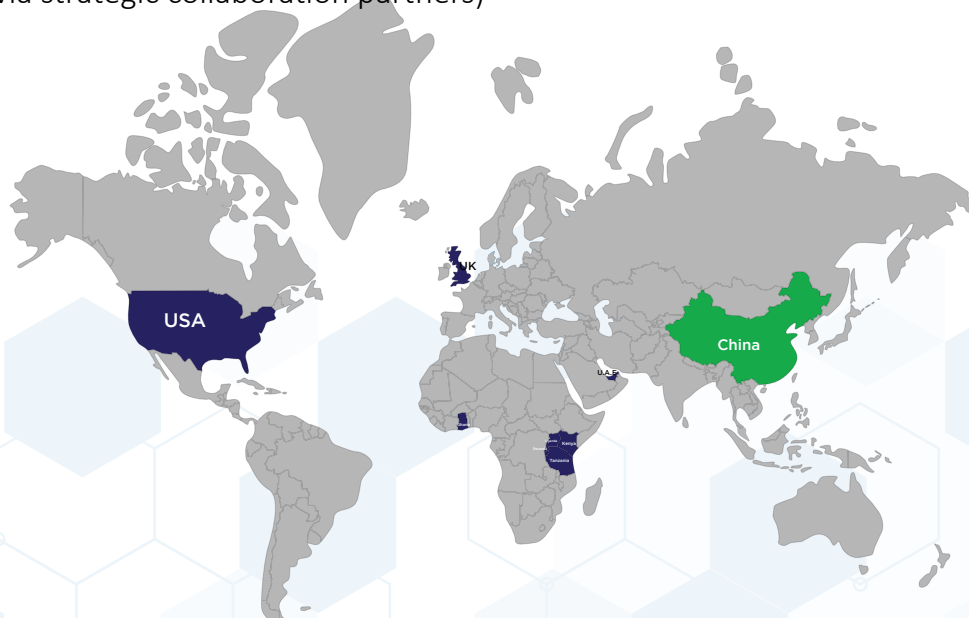
As a forward-thinking and purpose-driven enterprise, **IMP GLOBAL GROUP (IGG)** is dedicated to delivering transformative solutions that respond to the evolving needs of modern economies. The group leverages advanced technologies, data-driven decision-making, and environmentally responsible practices to enhance productivity, promote inclusive development, and contribute to global sustainability goals. Through its work, **IGG** continues to shape industries and empower communities, positioning itself as a reliable partner for governments, institutions, investors, and enterprises seeking long-term, impactful growth.

IMP GLOBAL GROUP (IGG) represents a bold and integrated model for cross-sectoral innovation, investment facilitation, and sustainable transformation. With a clear focus on quality, value creation, and global collaboration, **IGG** continues to build resilient futures through projects that are socially inclusive, economically viable, and environmentally sound.

Global Operational Footprint:

IGG IGG maintains a robust and expanding international presence, with active operations and partnerships in:

- **Africa:** Tanzania, Kenya, Rwanda, Uganda, Ghana
- **Middle East:** United Arab Emirates
- **Europe:** United Kingdom
- **North America:** United States
- **Asia:** China (via strategic collaboration partners)





VISION:

To be the preferred innovative organisation offering value for money services to our customers.



MISSION:

To inspire professionalism, innovation, collaboration and teamwork towards exemplary delivery with assured returns to stakeholders.



CORE VALUES:

- Professionalism
- Innovation
- Collaboration
- Teamwork

IMP GLOBAL LTD operates as the strategic consultancy arm of IGG, delivering world-class advisory services to private enterprises, government bodies, and nonprofit organisations across a broad spectrum of industries. Leveraging a team of highly experienced professionals and domain experts, IMP GLOBAL LTD provides innovative, data-informed, and results-oriented solutions that are customised to meet the dynamic and complex needs of its clients.

Core Service Offerings:

- **Project and Construction Management (PCM):** **IMP GLOBAL LTD** offers end-to-end project and construction management services, ensuring the successful delivery of complex infrastructure and capital development projects. Services encompass planning, execution, monitoring, and quality assurance, with a focus on meeting deadlines, controlling costs, and adhering to the highest industry standards.
- **Business Strategy and Management Consulting:** – The firm partners with organisations to refine their strategic direction, enhance operational efficiency, and boost overall performance. Through in-depth analysis and stakeholder engagement, IMP GLOBAL LTD helps clients identify growth opportunities, streamline processes, and achieve sustainable competitive advantage.
- **Financial Advisory & Investment Consulting** – Providing clients with expert guidance on financial strategy, market dynamics, capital structuring, and risk management. Services include financial modelling, investment evaluation, due diligence, and support for mergers, acquisitions, and capital raising initiatives.
- **Technology & Digital Transformation** – IMP GLOBAL LTD supports clients in leveraging emerging technologies to modernise operations and foster innovation. This includes the design and implementation of digital strategies, automation solutions, and data analytics frameworks that drive organisational agility and future readiness.
- **Public Sector & Government Advisory** – Offering strategic advisory services to public institutions and government agencies, IMP GLOBAL LTD contributes to the design and execution of policies and programs that advance economic development, institutional reform, and social impact.
- **Sustainability and ESG (Environmental, Social, and Governance) Consulting:** – The firm assists organisations in integrating sustainability principles into their core operations. Services focus on ESG strategy development, regulatory compliance, impact measurement, and stakeholder engagement to promote long-term value creation and responsible governance.

IMP GLOBAL PLANNERS

Within the **IGG** ecosystem, **IMP GLOBAL PLANNERS** serves as the group's specialist unit for urban and town planning, land development, and spatial transformation. The unit delivers end-to-end land planning solutions, transforming raw or underutilised land into vibrant, high-value residential, commercial, industrial, and mixed-use developments.

IGG's approach to land development is underpinned by:

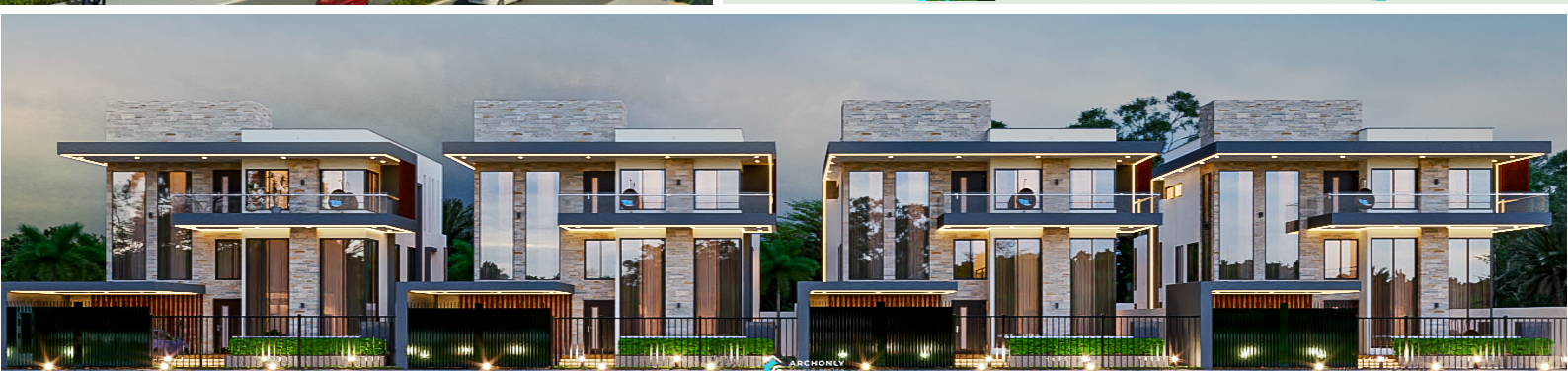
- Smart City Integration: Embedding digital infrastructure, intelligent systems, and data analytics in the planning process.
- Sustainable Urbanism: Prioritising environmental responsibility, climate resilience, and low-carbon infrastructure.
- Infrastructure Efficiency: Ensuring the rational design and cost-effective implementation of utilities, mobility systems, and public services.
- Economic Alignment: Supporting national and regional development goals through land optimisation and value generation.

Design, Engineering, and Cost Management Capabilities

Through a network of collaborating architectural and engineering partners, IGG delivers comprehensive technical services that include:

- **Urban Design & Master Planning**
- **Architectural and Structural Engineering Design**
- **MEP (Mechanical, Electrical, and Plumbing) Systems Design**
- **Quantity Surveying and Cost Management**
- **Construction Supervision and Contract Administration**

These services form a critical component of **IGG's** project delivery model, enabling the successful implementation of world-class infrastructure, real estate, and industrial developments across diverse markets.



SMARTCITIES, a real estate division of IGG registered in both the United Kingdom and Tanzania, is dedicated to the advancement of intelligent, sustainable, and future-oriented urban environments. As a leader in real estate and urban development, **SMARTCITIES** specialises in the end-to-end planning, design, and implementation of residential, commercial, mixed-use, and industrial developments that redefine modern living.

Vision and Commitment

SMARTCITIES is driven by a vision to revolutionise urban living through innovation, digital transformation, and ecological responsibility. By embracing innovative urban planning strategies and sustainable development practices, the company is committed to building cities that are not only smart and efficient, but also inclusive, resilient, and future-ready.



Vision and Commitment

SMARTCITIES is driven by a vision to revolutionise urban living through innovation, digital transformation, and ecological responsibility. By embracing innovative urban planning strategies and sustainable development practices, the company is committed to building cities that are not only smart and efficient, but also inclusive, resilient, and future-ready.

1. Smart City Development

SMARTCITIES leads the transformation of urban spaces through the integration of advanced technologies, efficient infrastructure, and sustainable practices. The company focuses on creating interconnected urban ecosystems that enhance quality of life, promote economic growth, and support long-term environmental stewardship.

2. Mixed-Use Developments

The firm designs and delivers high-quality, multifunctional spaces that combine residential, commercial, and corporate uses. These developments foster vibrant, inclusive communities by seamlessly blending living, working, and recreational environments.

3. Hospitality and Tourism Infrastructure

SMARTCITIES promotes development of premium hospitality assets, including luxury resorts, boutique hotels, and leisure facilities. These projects are tailored to promote tourism, cultural exchange, and economic diversification in emerging and established markets.

4. Green and Sustainable Building Solutions

Committed to responsible development, SMARTCITIES incorporates environmentally conscious design principles into every project. The company employs eco-friendly construction materials, renewable energy technologies, and energy-efficient systems to minimise environmental impact and promote long-term sustainability.

5. Affordable Housing Initiatives

In collaboration with government agencies, development partners, and non-governmental organisations, SMARTCITIES undertakes affordable housing projects aimed at addressing housing deficits across diverse population groups. These initiatives are designed to enhance social equity and improve living standards through accessible, well-planned housing solutions.

Core Areas
of Expertise

THEINFINITY is a specialised division of **IGG** that delivers strategic leadership and integrated solutions in project management, hospitality, leisure, and tourism development. Positioned at the intersection of visionary planning and world-class execution, **THEINFINITY** is committed to shaping exceptional experiences and sustainable growth across global markets.

By combining deep sectoral knowledge with multidisciplinary expertise, **THEINFINITY** provides high-impact project management services for complex initiatives in both the public and private sectors, with a strong focus on tourism infrastructure, premium hospitality assets, lifestyle developments, and recreational destinations.

THEINFINITY stands as a catalyst for transformative development in the hospitality, leisure, and tourism sectors, creating destinations that are not only economically viable but culturally enriching and environmentally responsible.

Vision and Strategic Purpose

At the heart of **THEINFINITY's** operations lies a commitment to innovation, sustainability, and global best practices. The division seeks to drive value across every project by aligning client goals with strategic insight, technical rigor, and creative vision. Through its multidisciplinary team and robust international network, **THEINFINITY** empowers stakeholders to transform ideas into impactful, future-ready developments.

Key Differentiators

- **Multinational project delivery capability**
- **Sector-specific expertise in tourism and hospitality**
- **Commitment to sustainability and ESG principles**
- **Integrated design, build, operate, and manage model**
- **Strategic alignment with IGG's global development vision**

Core Competencies and Service Domains

1. Strategic Project Management

THEINFINITY offers end-to-end project management services, overseeing the full lifecycle of high-value developments, from concept and feasibility through planning, execution, and post-completion operations. With a structured, outcomes-driven approach, the division ensures that projects are delivered on time, within budget, and to the highest standards of quality and stakeholder satisfaction. Services include:

- **Feasibility studies and investment planning**
- **Program and project governance**
- **Risk management and cost control**
- **Stakeholder engagement and compliance**
- **Quality assurance and performance monitoring**

2. Hospitality Development and Management

THEINFINITY designs, develops, and operates hospitality assets ranging from luxury hotels and boutique resorts to serviced residences and lifestyle properties. Its hospitality solutions are rooted in customer-centric design, operational excellence, and brand differentiation. Whether through greenfield developments or the repositioning of existing properties, **THEINFINITY** aims to deliver immersive, memorable guest experiences aligned with international benchmarks and evolving travellers' expectations.

3. Tourism and Leisure Infrastructure

With a forward-thinking approach to destination planning, **THEINFINITY** is actively involved in the creation of integrated tourism and leisure ecosystems. These include eco-tourism parks, cultural centres, entertainment zones, golf resorts, marinas, wellness retreats, and other experiential attractions that boost regional economic development, cultural preservation, and environmental stewardship. Projects are often executed in partnership with governments, tourism boards, and private investors.

4. Lifestyle and Mixed-Use Destinations

THEINFINITY leads the development of lifestyle-focused, mixed-use environments that blend hospitality, retail, wellness, recreation, and residential components into cohesive, community-oriented destinations. These developments are curated to appeal to both residents and visitors, creating hubs of cultural and economic activity that contribute to place-making and urban vibrancy.



SAGAGRI is the dedicated agribusiness arm of **IGG**, established to lead sustainable transformation across the agricultural value chain. With a focus on food security, rural development, and agritech innovation, **SAGAGRI** operates as a vertically integrated enterprise that combines modern farming practices with value-added processing, agri-logistics, and strategic market linkages.

Through its operations, **SAGAGRI** aims to unlock the full potential of agriculture as a driver of inclusive economic growth, environmental resilience, and long-term social impact. Its approach is grounded in scientific rigor, technology adoption, and inclusive partnerships with stakeholders.

SAGAGRI represents **IGG's** strategic commitment to transforming agriculture into a high-impact, high-value sector, bridging the gap between smallholder farmers and global markets, while contributing to economic resilience and sustainable development across the regions it serves.

Strategic Vision and Impact

SAGAGRI envisions a resilient, technology-enabled agricultural sector that delivers food security, economic empowerment, and environmental stewardship. The division is committed to:

- **Strengthening national and regional food systems**
- **Driving rural industrialization and job creation**
- **Promoting climate resilience and regenerative agriculture**
- **Ensuring traceability, safety, and quality in agricultural outputs**
- **Building sustainable, investable agribusiness ecosystems**

Core Areas of Operation

1. Primary Agricultural Production

SAGAGRI manages large-scale farming operations, cultivating a wide variety of crops including grains, oilseeds, and horticultural produce. The division emphasises the use of climate-smart agriculture (CSA), precision farming technologies, and sustainable land management to maximize yields while conserving natural resources.

2. Agribusiness and Agro-Industrial Processing

The company adds value across the agricultural supply chain by investing in agro-processing facilities for commodities such as cereals, oil crops, fruits, vegetables, and livestock products. These facilities support the production of food ingredients, packaged goods, animal feed, bio-products, and export-grade commodities, contributing to both import substitution and global competitiveness.

3. Agritech and Innovation

SAGAGRI integrates advanced technologies to enhance farm productivity and decision-making. The division supports research and innovation in crop genetics, soil health, water management, and mechanisation, with an emphasis on scalable solutions for emerging markets.

4. Livestock and Aquaculture Development

SAGAGRI is engaged in the development of sustainable livestock farming and aquaculture systems, including poultry, dairy, beef, and fish production.

5. Agricultural Infrastructure and Irrigation

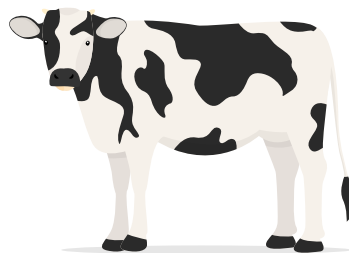
The division invests in essential infrastructure to support efficient production and distribution, including irrigation systems, storage silos, cold chains, rural roads, and mechanisation hubs. These assets reduce post-harvest losses, stabilize market supply, and increase farmer incomes.

6. Outgrower and Inclusive Value Chain Programs

SAGAGRI plans to collaborate closely with smallholder farmers through outgrower schemes, providing them with access to certified inputs, training, and guaranteed markets. These inclusive models are designed to build local capacity, enhance livelihoods, and ensure equitable value distribution across the chain.

Key Differentiators

- Fully integrated agribusiness model
- Advanced agritech and data-driven operations
- Strategic partnerships across public and private sectors
- Focus on ESG compliance and sustainable development goals (SDGs)
- Scalable projects aligned with national development priorities



STEP ALLIANCE GROUP is the construction and infrastructure development arm of **IGG**, operating as a multinational, multidisciplinary, and multicultural enterprise. The company is renowned for delivering large-scale civil, industrial, commercial, and residential projects with a focus on quality, innovation, and efficiency. With operations spanning multiple regions, **STEP ALLIANCE GROUP** provides fully integrated, end-to-end solutions, ranging from initial project conceptualisation to final execution and delivery

Core Service Areas

1. Infrastructure Development

STEP ALLIANCE GROUP specialises in the design and construction of critical infrastructure projects that form the backbone of modern economies. This includes roads, bridges, airports, seaports, and urban transport systems. The company is committed to delivering resilient, sustainable, and future-proof infrastructure assets.

2. Industrial and Commercial Construction

The company delivers tailored solutions for industrial and commercial clients, including the development of manufacturing facilities, warehouses, logistics centres, office complexes, and retail spaces. Each project is built to meet the highest standards of functionality, safety, and operational efficiency.

3. Residential and Mixed-Use Developments

STEP ALLIANCE GROUP specialises in the development of high-quality residential and mixed-use facilities that combine refined architectural design with modern functionality. The company delivers a diverse range of housing solutions, including luxury villas, contemporary apartments, integrated townships, and gated communities; engineered to meet the evolving needs of urban and suburban populations.

4. Project Management and EPC Services

Offering comprehensive Engineering, Procurement, and Construction (EPC) services, the company manages turnkey projects from start to finish. Its multidisciplinary teams ensure seamless coordination, cost control, and timely delivery while adhering to the highest engineering and safety benchmarks.

Excellence in Execution

STEP ALLIANCE GROUP is distinguished by its strong engineering expertise, commitment to international safety and quality standards, and the application of innovative construction technologies. Its capacity to execute complex and large-scale projects with efficiency has earned it a solid reputation across diverse sectors and geographies.



SAGMEQ EQUIPMENT (SAG) serves as the manufacturing and industrial engineering arm of **IGG**, specialising in the design, production, and distribution of high-performance machinery, equipment, materials, and advanced manufacturing systems. Strategically focused on Original Equipment Manufacturers (OEMs), the division plays a critical role in delivering durable, efficient, and innovative solutions that meet the evolving demands of construction, mining, energy, and other industrial sectors

With a commitment to engineering excellence and technological advancement, **SAGMEQ EQUIPMENT (SAG)** supports a wide range of industries through precision manufacturing and tailored solutions that enhance productivity, reduce downtime, and ensure operational reliability.

Core Capabilities and Offerings

1. Heavy Machinery and Industrial Equipment

SAGMEQ EQUIPMENT (SAG) designs and manufactures robust, high-capacity machinery for heavy-duty applications, including construction, mining, material handling, and large-scale industrial operations. These machines are engineered for optimal performance, safety, and longevity under demanding conditions.

2. Customised Construction Materials and Equipment

The company offers bespoke construction materials and equipment solutions tailored to specific project requirements. This includes structural components, formwork systems, architectural systems, services components, and modular construction tools, designed to align with diverse architectural and engineering specifications.

3. Smart and Automated Manufacturing Systems

Leveraging the power of Artificial Intelligence (AI), the Internet of Things (IoT), and automation technologies, **SAGMEQ EQUIPMENT (SAG)** develops intelligent manufacturing solutions that streamline production processes, minimise waste, and maximise throughput. These systems support Industry 4.0 integration for next-generation industrial performance.

4. Renewable Energy and Sustainable Equipment Solutions

In line with global sustainability goals, **SAGMEQ EQUIPMENT (SAG)** manufactures eco-friendly and energy-efficient equipment that supports renewable energy initiatives, such as solar, wind, and bioenergy systems. The company also integrates sustainable materials and practices into its production processes to reduce environmental impact.

5. OEM Manufacturing and Aftermarket Services

SAGMEQ EQUIPMENT (SAG) provides comprehensive OEM solutions including the manufacturing of original parts, equipment components, and fully assembled units. In addition, the company offers a full suite of aftermarket services such as spare parts supply, maintenance, repair, and technical support to ensure the longevity and reliability of industrial machinery.

Commitment to Innovation and Industrial Advancement

SAGMEQ EQUIPMENT (SAG) is dedicated to advancing manufacturing excellence by combining engineering expertise with state-of-the-art technologies. Its mission is to empower industrial clients through innovative, dependable, and sustainable solutions that drive productivity, operational efficiency, and long-term value creation.

FACILITIESSAG

Strategic Excellence in Integrated Facilities Management

FACILITIESSAG is the dedicated Facilities Management (FM) division of **IGG**, embodying the Group's strategic commitment to delivering holistic, innovative, and high-performance FM solutions. Our mandate is to manage, optimise, and enhance the built environment through a comprehensive, multi-disciplinary approach that spans the entire lifecycle of facility operations.

With a focus on operational excellence, sustainability, and client-centric service, **FACILITIESSAG** integrates strategic planning, design oversight, engineering services, and operational support to deliver tailored solutions that are scalable, cost-effective, and aligned with business objectives.

FACILITIESSAG continues to redefine standards in Facilities Management under the IGG Group, delivering intelligent, future-ready solutions that support our clients' success while reinforcing our commitment to operational excellence and sustainable growth.



Comprehensive Service Portfolio

Design Management

FACILITIESSAG provides end-to-end Design Management services, ensuring that every aspect of facility development aligns with performance, functionality, regulatory, and aesthetic standards. Our team collaborates closely with architects, engineers, and stakeholders from concept to completion, overseeing spatial planning, infrastructure integration, and systems design to achieve optimal outcomes for both new and existing facilities.

Integrated MEP, HVAC, Fire, ELV & ICT Systems Maintenance

We specialize in the preventive and corrective maintenance of all critical technical systems, including:

- **Mechanical, Electrical, and Plumbing (MEP) systems**
- **Heating, Ventilation, and Air Conditioning (HVAC) systems**
- **Fire Detection, Suppression, and Alarm Systems**
- **Extra-Low Voltage (ELV) systems (e.g., CCTV, access control, public address)**
- **Information and Communication Technology (ICT) infrastructure**

Our certified engineers and technicians deploy advanced diagnostic tools and Computerised Maintenance Management Systems (CMMS) to ensure these systems operate reliably, efficiently, and safely, minimising downtime and extending asset life cycles.

Landscaping Services

FACILITIESSAG offers professional landscaping services that enhance the aesthetic and environmental value of client premises. From design and installation of softscapes and hardscapes to the ongoing care of green spaces, irrigation systems, and seasonal maintenance, we ensure that outdoor environments remain vibrant, sustainable, and compliant with ecological best practices.

Facility Management Planning

Our facility management strategies are rooted in deep analytical insights. **FACILITIESSAG** conducts needs assessments, lifecycle and cost-benefit analyses, and space utilisation audits to develop bespoke FM plans. These plans are designed to optimise resource allocation, improve space efficiency, and support long-term operational objectives.

Electrical & Plumbing Repairs

We deliver a full suite of electrical and plumbing repair services, including:

- Preventive and emergency maintenance
- Fault detection and resolution
- System upgrades and retrofits

All services are performed in accordance with local codes, international standards, and industry best practices.

General Cleaning Services

FACILITIESSAG maintains high standards of cleanliness and hygiene across client facilities through:

- Routine janitorial services
- High-traffic area sanitation
- Specialised cleaning for sensitive environments

We utilise eco-friendly products and ensure compliance with health and safety guidelines.

Security & Surveillance Services

We offer robust security solutions tailored to each facility's risk profile, including:

- Deployment of trained security personnel
- Installation and management of CCTV and surveillance systems
- Access control and perimeter monitoring
- Security assessments and audits

Our integrated approach ensures the protection of personnel, assets, and information.

Why Partner with FACILITIESSAG

- **Holistic Integration:** We bring together technical, operational, and strategic FM disciplines under one unified framework.
- **Specialised Expertise:** Our team comprises industry-certified professionals with deep knowledge in engineering, safety, technology, and design.
- **Tailored Solutions:** We customise every FM package to align with client needs, industry standards, and budgetary considerations.
- **Technology-Driven Operations:** Leveraging state-of-the-art FM software and IoT-enabled systems, we ensure proactive maintenance and real-time performance monitoring.
- **Commitment to Excellence:** Quality, safety, sustainability, and customer satisfaction are embedded into every level of our operations.

SmartOptionPortal is the technology and digital innovation division of **IGG**, established as a centralized AI-powered collaborative platform designed to drive digital transformation, data intelligence, and operational efficiency across multiple sectors. Positioned at the forefront of emerging technologies, **SmartOptionPortal** integrates advanced artificial intelligence, machine learning, big data analytics, and cloud-based collaboration tools to enable intelligent decision-making, agile project execution, and cross-functional integration across diverse business units.

As a strategic digital infrastructure, **SmartOptionPortal** serves as both an internal enterprise ecosystem and a scalable technology solution for external partners, governments, and private organisations seeking to enhance connectivity, innovation, and real-time data-driven collaboration.

Strategic Vision and Impact

SmartOptionPortal is a catalyst for **IGG's** mission to build intelligent, future-ready enterprises and infrastructure ecosystems. Through its application of artificial intelligence, digital collaboration, and operational intelligence, the platform aims to:

- Accelerate digital transformation across **IGG's** subsidiaries
- Enhance agility, coordination, and value delivery in complex projects
- Support sustainability, ESG tracking, and compliance reporting
- Drive innovation in public-private partnerships and smart infrastructure
- Foster a culture of digital fluency and data-driven leadership

Key Differentiators

- Proprietary AI algorithms and automation frameworks
- Real-time analytics, dashboards, and executive insights
- Integration-ready with APIs and scalable digital architecture
- Customisable sector-specific modules (e.g., smart cities, agritech, infrastructure)
- Strategic alignment with **IGG's** global development and digital strategy

SmartOptionPortal reflects **IGG's** forward-thinking commitment to leveraging technology as a strategic enabler of growth, efficiency, and innovation. It stands as a digital command centre, powering intelligent collaboration, predictive operations, and resilient project delivery in an increasingly connected world.

Core Capabilities and Functional Domains

1. AI-Powered Project Collaboration and Management

SmartOptionPortal enables real-time collaboration across teams, geographies, and business functions. Its AI-driven workflows automate complex project management tasks, including resource allocation, performance tracking, predictive risk management, and stakeholder reporting. This results in faster execution, increased transparency, and higher project success rates.

2. Data Integration and Analytics

The platform aggregates and analyses large datasets from various operational divisions—ranging from construction, real estate, and agriculture to finance and logistics. Through embedded machine learning algorithms, it delivers actionable insights, forecasts, and optimisation strategies that empower leadership to make data-informed decisions with precision and speed.

3. Intelligent Business Process Automation (BPA)

SmartOptionPortal streamlines enterprise processes by automating repetitive, rule-based tasks across teams, finance, procurement, HR, supply chain, and customer service operations. The platform’s intelligent automation capabilities reduce administrative overhead, increase productivity, and ensure compliance through adaptive governance models.

4. Secure Cloud-Based Architecture

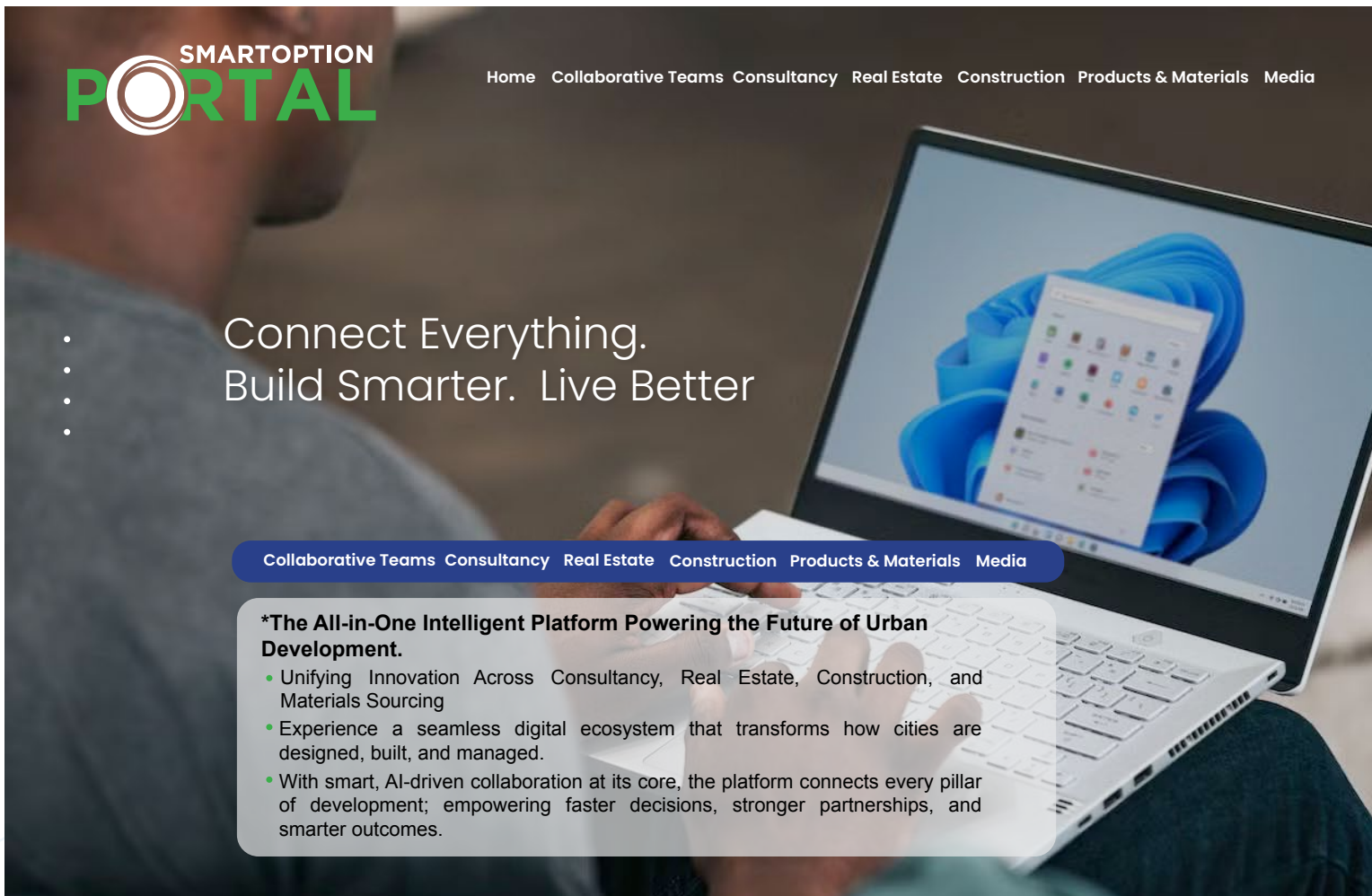
Built on a robust cloud infrastructure, **SmartOptionPortal** ensures data security, system scalability, and uninterrupted access to digital resources. It supports role-based access, encrypted communication, and data integrity protocols in compliance with international cybersecurity standards.

5. Digital Twin and Simulation Technology

For complex infrastructure and industrial projects, the platform supports digital twin modelling and simulation, enabling real-time virtual representation of physical assets. This functionality allows project stakeholders to evaluate scenarios, optimise performance, and proactively manage lifecycle costs.

6. Cross-Sector Integration and Customization

SmartOptionPortal is built with modular architecture, allowing seamless integration with third-party systems (ERP, CRM, BIM, IoT platforms) and customised functionality based on industry-specific requirements. It acts as a unified digital hub, facilitating cross-sectoral alignment and harmonised execution across **IGG’s** core verticals.



Connect Everything.
Build Smarter. Live Better

***The All-in-One Intelligent Platform Powering the Future of Urban Development.**

- Unifying Innovation Across Consultancy, Real Estate, Construction, and Materials Sourcing
- Experience a seamless digital ecosystem that transforms how cities are designed, built, and managed.
- With smart, AI-driven collaboration at its core, the platform connects every pillar of development; empowering faster decisions, stronger partnerships, and smarter outcomes.

CORPORATE & OFFICE FACILITIES

Class A, Bank HQ

Client: CRDB

Description: Class A, Bank HQ at Dar Es Salaam (B+G+M+11)

Location: Dar es Salaam

BUA: 31,807 SQM

Project Cost: USD 30 M

Services Rendered: Project Strategy, Concept Development & Project Management



MOROCCO SQUARE

Design and Build of Mixed use Facilities on plots No. 1-3 Bagamoyo Road; The project consist of Offices, Hotel & Residential Towers with total Gross Floor Area of 110,000 Square Meters

Client: National Housing Corporation

Location: Dar es Salaam

Start Date: 24th June 2014

Completion Date: Ongoing

Value: USD 83m

Serviced Rendered: Project Strategy, Concept Development & Project Management



KAWE 711

Design and Build of Commercial & Residential Facilities on plot 711/1 – Kawe: The project consists of Eight Towers with total Gross Floor Area of 111,000 Square Metres

Client: National Housing Corporation

Location: Dar es Salaam

Start Date: 18th November 2015

Completion Date: Ongoing

Serviced Rendered: Project Strategy, Concept Development & Project Management



KAWE GPR

Client: NHC

Description: Proposed Commercial & Residential Facilities(GPR) B+G+15 for National housing Corporation Plot No 711, long Mwai Kibaki Kawe Dar-Es- Salam, Tanzania.

Location: Dar es Salaam

Built up Area (BUA): 54,737 SQM

Project Cost: USD 43m

Serviced Rendered: Project strategy, Concept Development & Project Management



VICTORIA PLACE

Design and Build of Commercial and Residential Facilities on plots 36&37 along Bagamoyo Road: The project consists of Two Towers with total Gross Floor Area of 32,000 Square Metres

Client: National Housing Corporation (NHC)

Location: Dar es Salaam

Start Date: 16th January 2014

Completion Date: 2018

Serviced Rendered: Project Strategy Concept
Development & Project
Management



TMG GHANA (COMMUNITY 18 PROJECT)

- Customised and uniquely designed high end gated community Development.

Client: TMG GHANA

Location: Accra, Ghana

Start Date: T.B.A

Completion Date: T.B.A

Serviced Rendered: Project Strategy, Design Management, Business Development Advisory and Project Management



CHEZ LANDO HOTEL, KIGALI

- Client:** Chez Lando Hotel
Description: Chez Lando Hotel, Kigali
Contractor: Hygebat Construction Ltd
Location: Kigali, Rwanda
Status: Completed 2021
Services: Project Management



PENSION TOWER, KAMPALA, UGANDA

- Client:** NSSF Uganda
Description: Mixed Use Pension Tower
Contractor: CRCEG
Value: USD 75M
Location: Kampala, Uganda
Status: Ongoing
Services: Project Management
(Firefighting)



AN ICONIC OFFICE DEVELOPMENT

Client: TRA

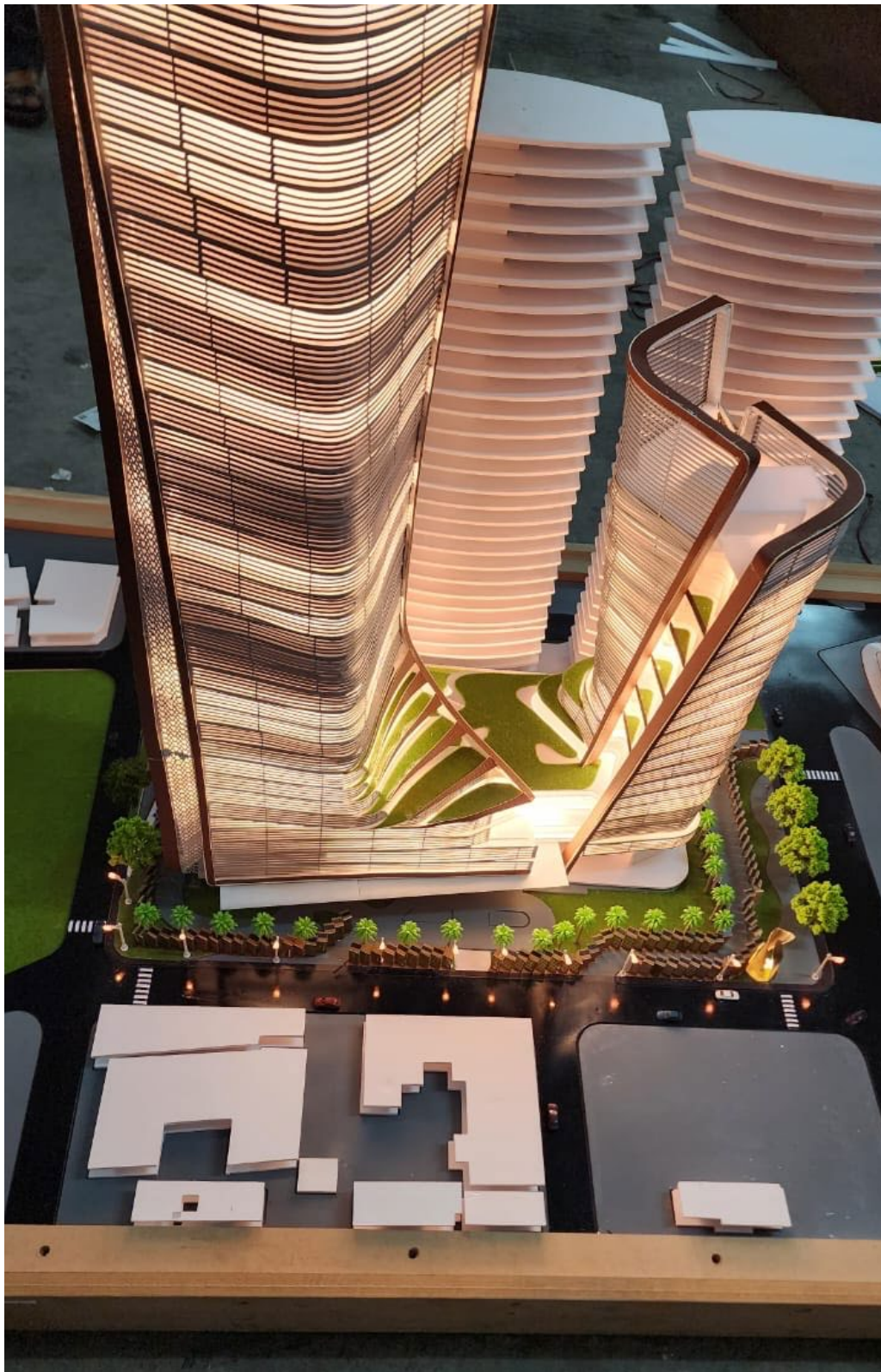
Description: International competition for the Proposed Ultra-Modern and Iconic TRA Office Building.

Value: USD 100m

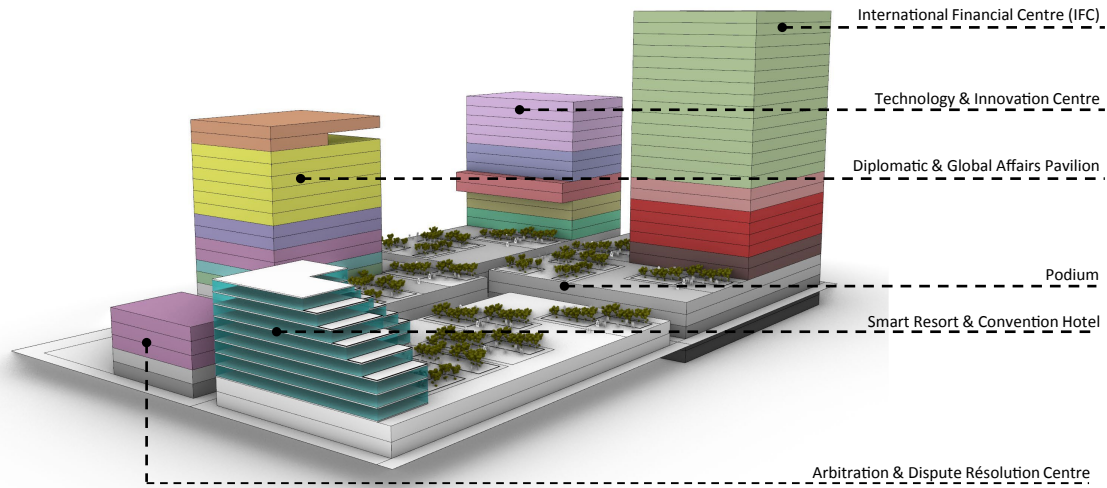
Location: Dar Es Salaam, Tanzania

Status: Concept

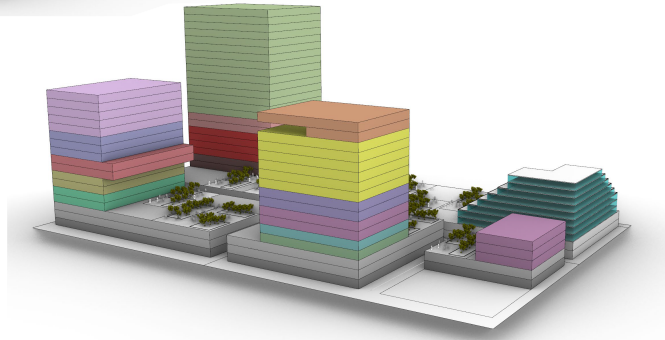
Services: Strategic governance & Project Management (structured innovative collaborative team leading to the winning solution)



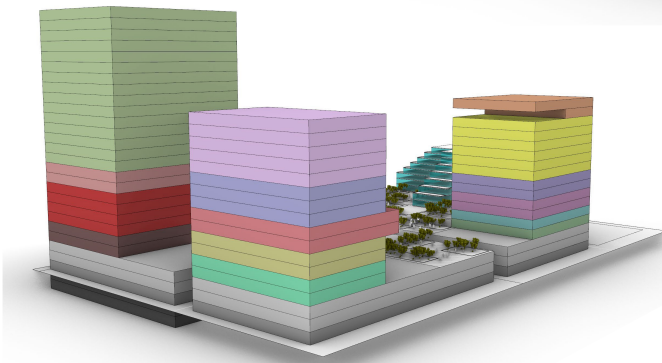
THE PROPOSED IGC, ZANZIBAR



View_1



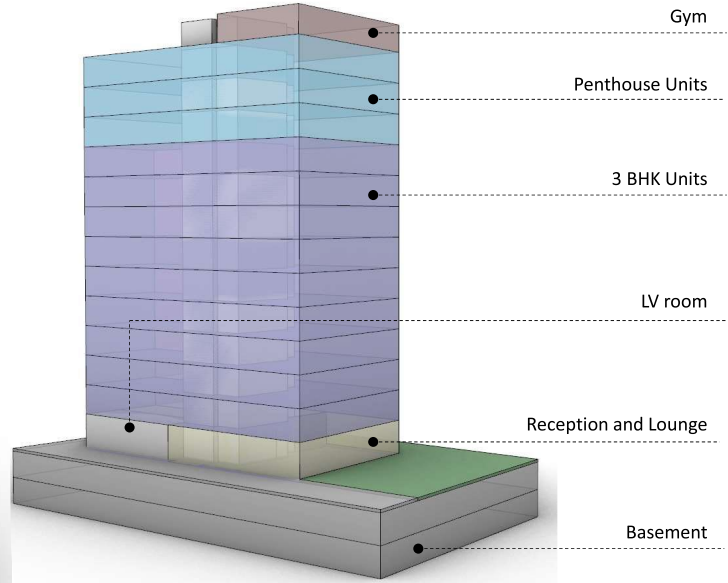
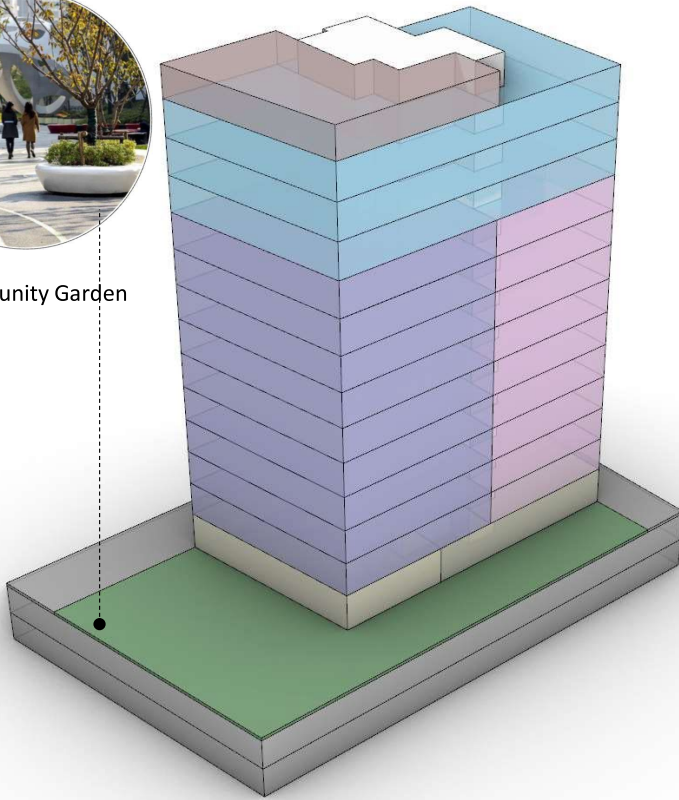
View_2



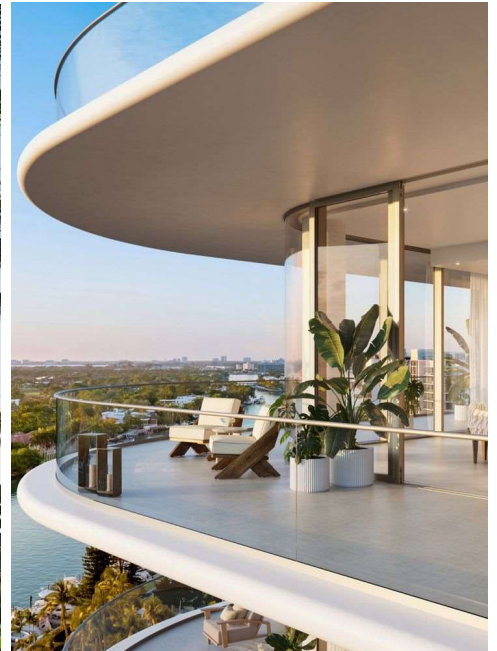
A dynamic cluster of sculptural towers in varied heights, seamlessly linked at podium level to create vibrant common spaces for gatherings, exhibitions, and informal breakouts — all while preserving the privacy of each function.



Community Garden



Perspective View



- An elegant dialogue between form and nature, where flowing lines and tactile materials create a timeless presence. Light and shadow shape the experience, breathing life into the structure. A design language that feels both contemporary and deeply connected to its environment.

Services: Project Strategy, Concept Development, Business Plan, Design Management, Project Management

GLASGOW HARBOUR DEVELOPMENT

Description: Mixed Use Development

Size: 130 acres

Location: Glasgow, Scotland, UK

Status: Complete

Value: £1.3BN



PALM JUMEIRAH - DUBAI

Client: Palm Jumeirah

Description: Masterpiece man-made Island - Palm Jumeirah

Contractor: Palm Jumeirah, Dubai

Location: Dubai, UAE

Status: Complete

Services: Project Management- The Fairmont Residence & Hotel Development



BONDENI CITY

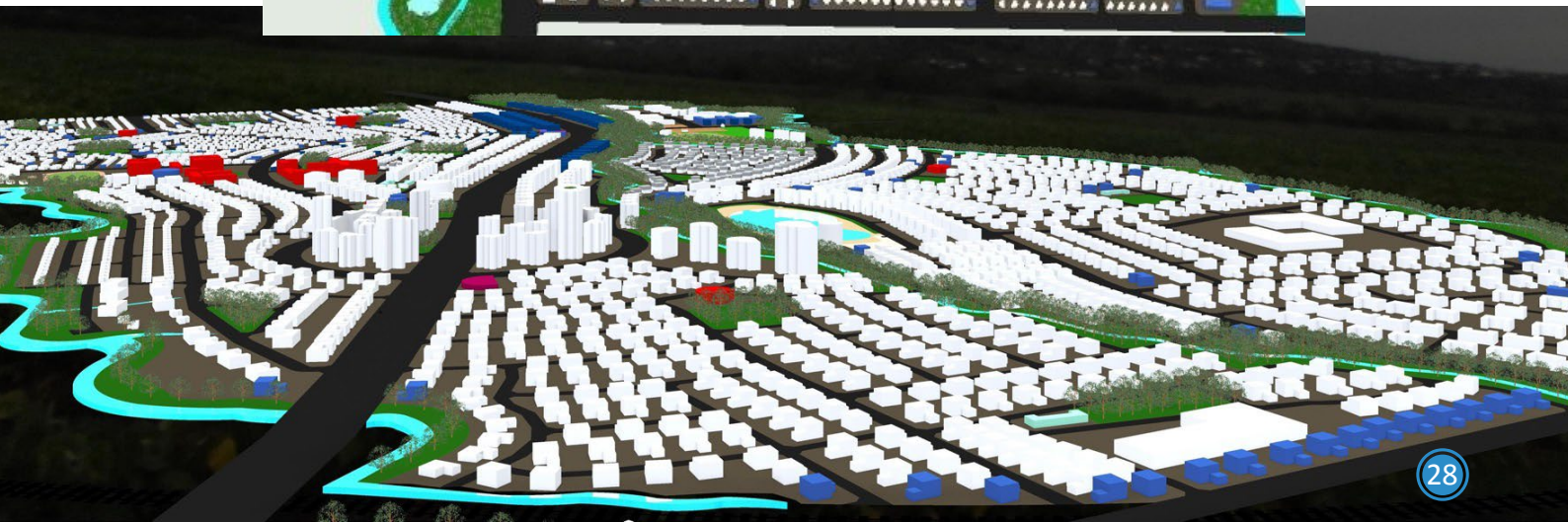
Description: Special Planned and unique Bondenicity for a mixed use and sustainable Township

Size: 1000 acres

Location: Arusha Tanzania

Status: Complete

Services: Project Strategy, Concept Development, Business Plan, Design Management, Project Management



SAFARICITY

Planned Masterpiece Located at Arusha, Tanzania



GREEN CENTRE - MAFINGA.

Green Centre Development at Kinyanambo - Mafinga, Iringa. The area covers total area of 48Ha.



Project: AVIC Town Development

Size: 129 Villa & Land - 1.6m Square meters

Location: Dar Es Salaam, Tanzania



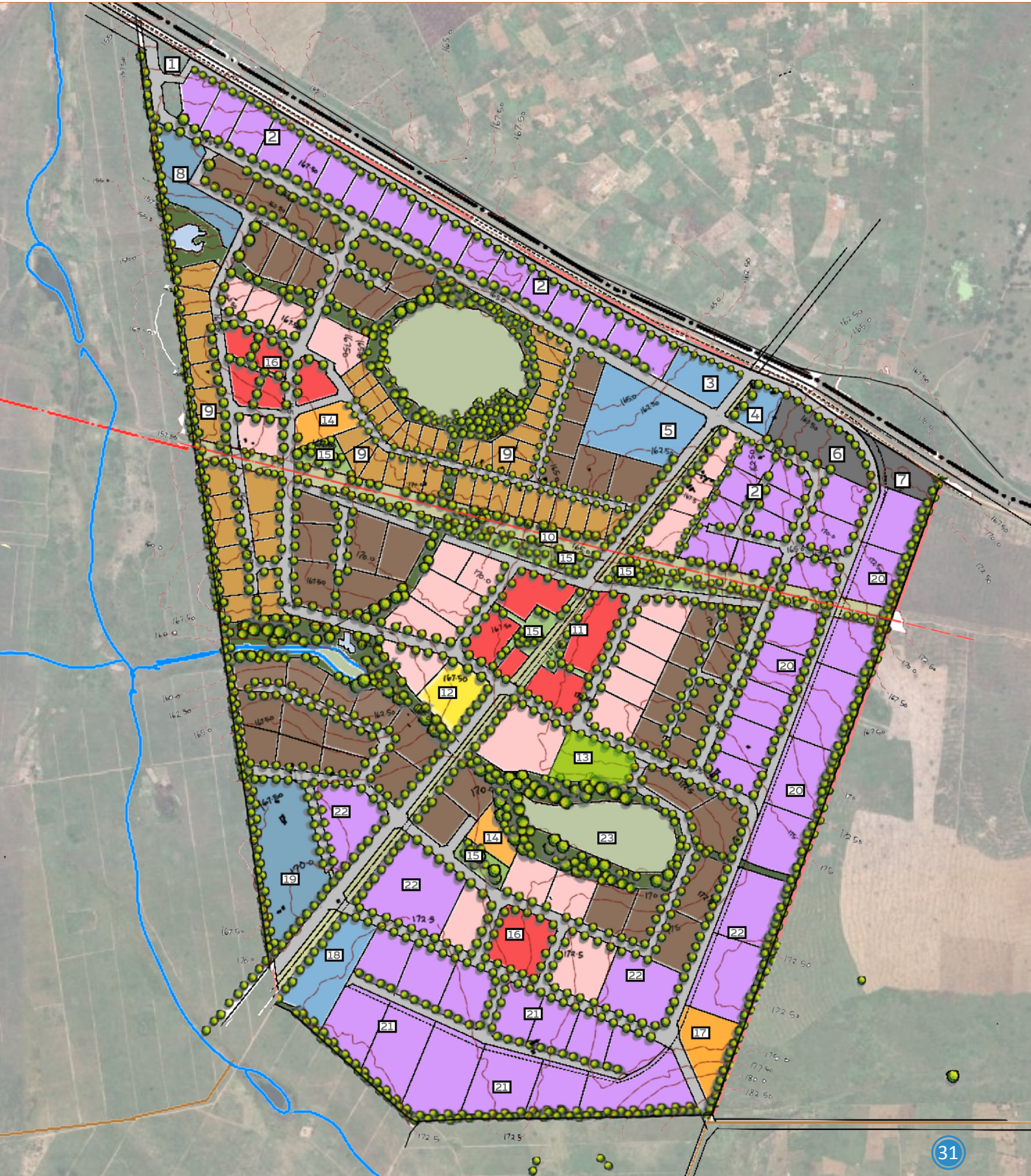
Project: SECURECITY

Size: 1,497 acres (6,058,359 square metres)

Location: Kibaha, Coast Region, Tanzania

Use: Mixed use (industrial drive)

Scope: Planning & development



AFFORDABLE HOUSING

Kibada development - the first global Green Mark Certified Affordable housing scheme



KAMBARAGE HOUSE

The first Green Mark Certified Corporate office Building in Africa

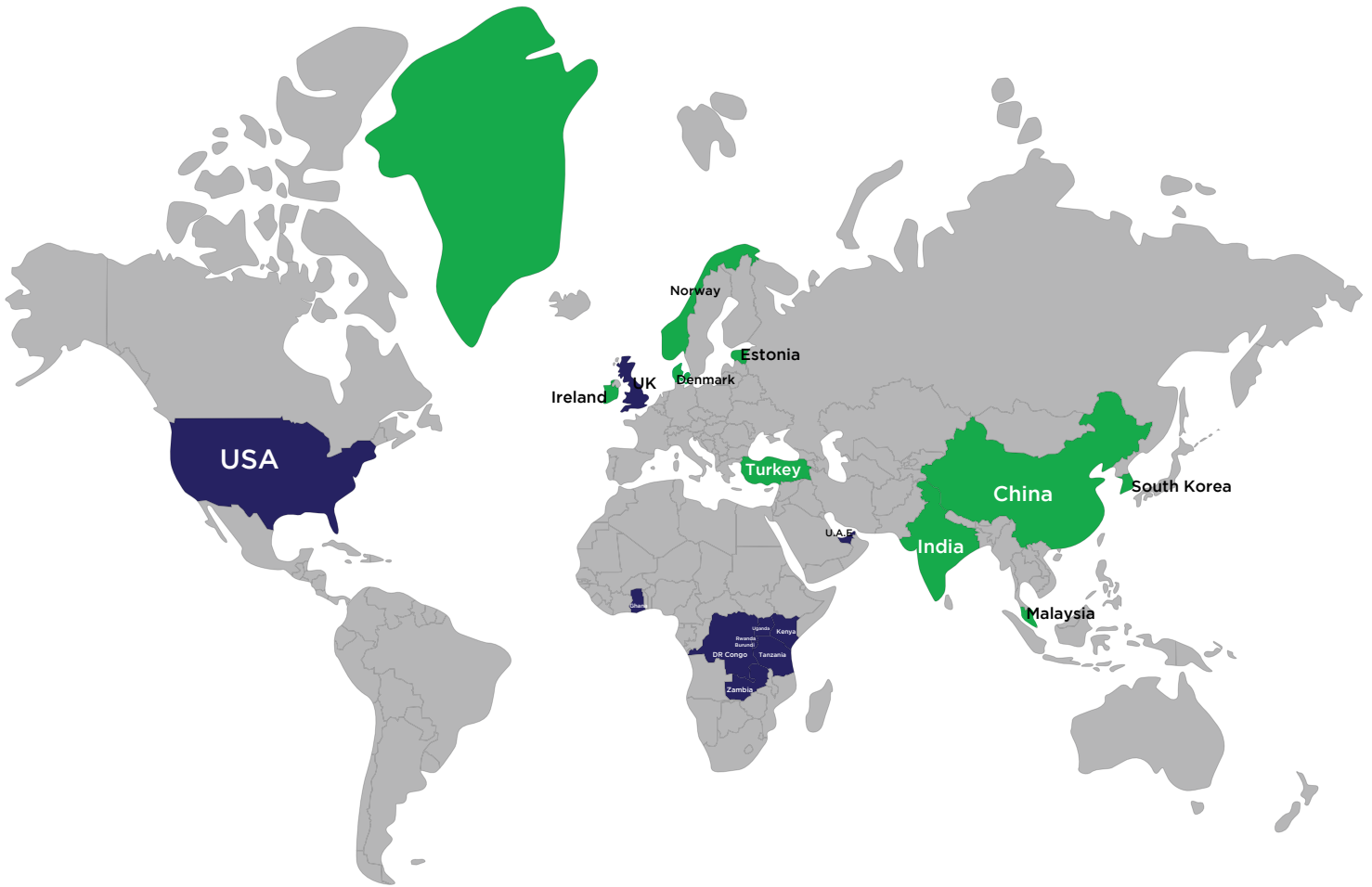


RESIDENTIAL

Eco Residence- the first Green Mark Certified Residential high rising building in Africa



GLOBAL REACH



IMP Offices

IMP Collaboration Partners



IMP GLOBAL GROUP

BUILDING INVESTMENT ECOSYSTEM

(DIVISIONS)



CONSULTANCY



REAL ESTATE



STEP ALLIANCE GROUP
COMMITTED TO EXCELLENCE

CONSTRUCTION



MANUFACTURING



HOSPITALITY



AGRI-BUSINESS



TECHNOLOGIES

AMERICA . EUROPE . MIDDLE EAST . ASIA . AFRICA

Contact Us

📍 P.O. Box7681, Dar Es Salaam, Tanzania
P.O. Box 111074, Dubai, U.A.E
London, Uk

☎ +255 766 433 920
+971 50 451 3926
+44 7438 572289

✉ issack@impglob.com

🌐 www.impglobalgroup.com